

h=40

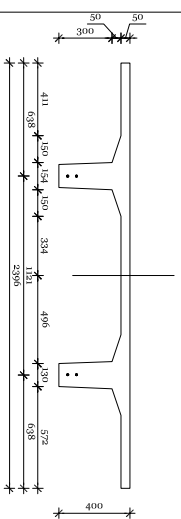
h=50

h=60

h=70

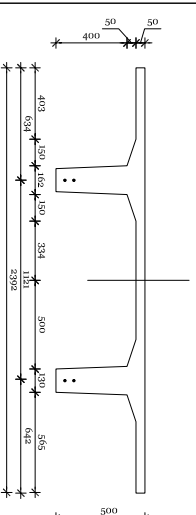
h=80

4 struny



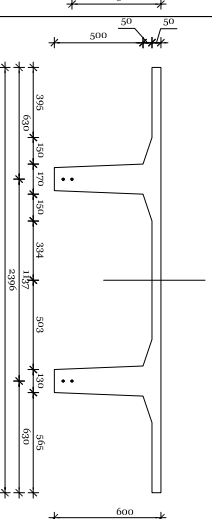
V = 0,2354 m³/mb
 Q = 5,89 kN/mb
 ciężna: 4 x 15,2mm - 4,37kg/mb

PLYTA
 TT240.40.R60.4.13



V = 0,2678 m³/mb
 Q = 6,70 kN/mb
 ciężna: 6 x 15,2mm - 4,37kg/mb

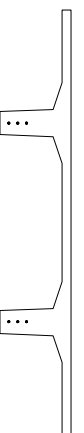
PLYTA
 TT240.50.R60.4.13



V = 0,3018 m³/mb
 Q = 7,55 kN/mb
 ciężna: 4 x 15,2mm - 4,37kg/mb

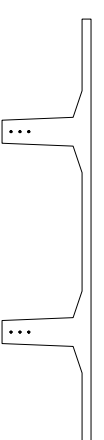
PLYTA
 TT240.60.R60.4.13

6 strun



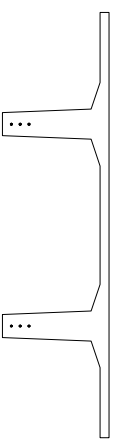
V = 0,2354 m³/mb
 Q = 5,89 kN/mb
 ciężna: 6 x 15,2mm - 6,57kg/mb

PLYTA
 TT240.40.R60.6.13



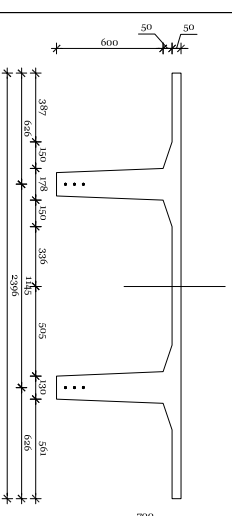
V = 0,2678 m³/mb
 Q = 6,70 kN/mb
 ciężna: 6 x 15,2mm - 6,57 kg/mb

PLYTA
 TT240.50.R60.6.13



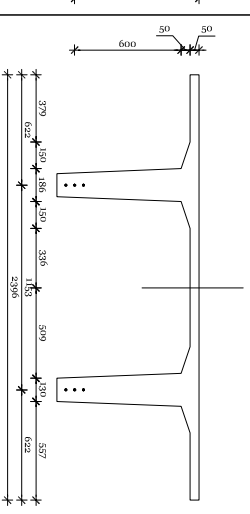
V = 0,3018 m³/mb
 Q = 7,55 kN/mb
 ciężna: 6 x 15,2mm - 6,57kg/mb

PLYTA
 TT240.60.R60.6.13



V = 0,3374 m³/mb
 Q = 8,44 kN/mb
 ciężna: 6 x 15,2mm - 6,57kg/mb

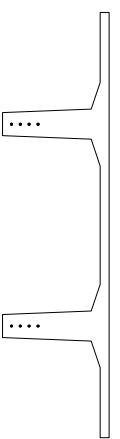
PLYTA
 TT240.70.R60.6.13



V = 0,3746 m³/mb
 Q = 9,37 kN/mb
 ciężna: 6 x 15,2mm - 6,57kg/mb

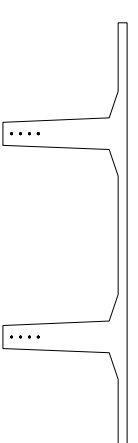
PLYTA
 TT240.80.R60.6.13

8 strun



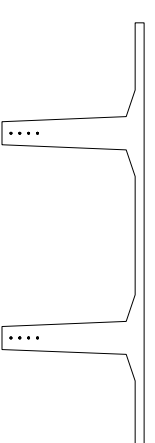
V = 0,3018 m³/mb
 Q = 7,55 kN/mb
 ciężna: 8 x 15,2mm - 8,76kg/mb

PLYTA
 TT240.60.R60.8.13



V = 0,3374 m³/mb
 Q = 8,44 kN/mb
 ciężna: 8 x 15,2mm - 8,76kg/mb

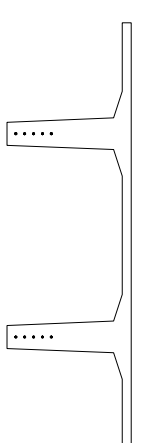
PLYTA
 TT240.70.R60.8.13



V = 0,3746 m³/mb
 Q = 9,37 kN/mb
 ciężna: 8 x 15,2mm - 8,76kg/mb

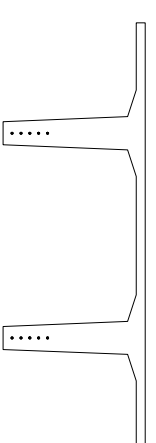
PLYTA
 TT240.80.R60.8.13

10 strun



V = 0,3374 m³/mb
 Q = 8,44 kN/mb
 ciężna: 10 x 15,2mm - 10,95 kg/mb

PLYTA
 TT240.70.R60.10.13



V = 0,3746 m³/mb
 Q = 9,37 kN/mb
 ciężna: 10 x 15,2mm - 10,95kg/mb

PLYTA
 TT240.80.R60.10.13

plyta TT

szerokość płyty: 239,6cm

grubość półki: 5,0cm

szerokość żebra: 13,0cm

ognioodporność: R60